



PRECISION AND QUALITY



30 years **experience**

THE COMPANY WAS FOUNDED IN 2004 AND IT WORKS IN THE FIELD OF PRECISION MACHINING.

Despite its recent appearance Mecwork boasts a **Know - How of 30 years** in the field of precision machining, as it was formed as a detachment of an established company, absorbing its technical input and thereby acquiring, automatically, the production capacity and professionalism.

Mecwork is certified **UNI EN ISO 9001:2015, UNI EN ISO 14001:2015 and UNI EN ISO 45001:2018** and thanks to collaborations with other companies operating in the sector, is a reliable partner in the national and international markets that can provide a complete service.



**ISO 9001
ISO 14001
ISO 45001**
LL-C (Certification)







Mecwork offers **quality** and **eff**

1 | A warehouse well-stocked with raw materials

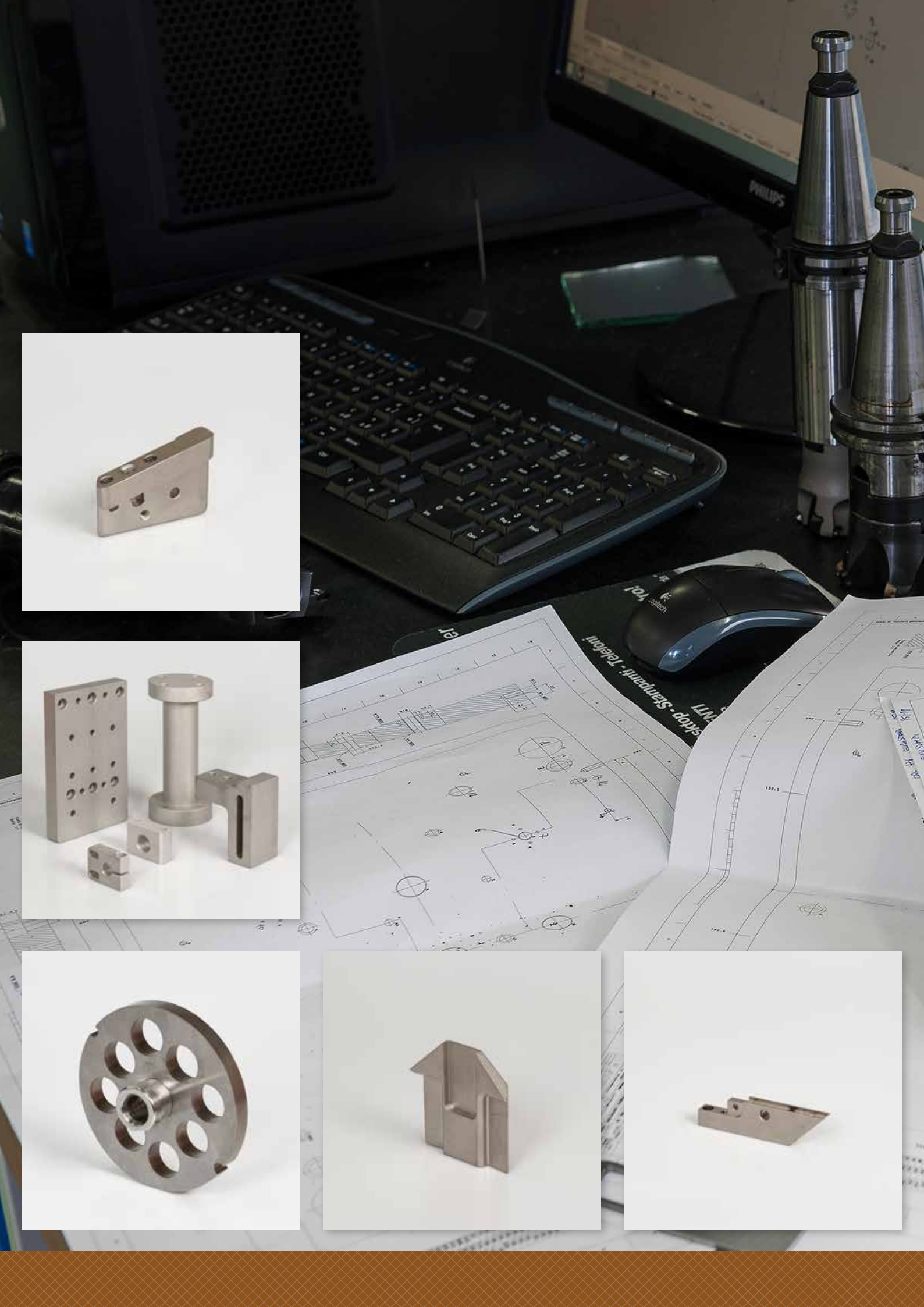
2 | Numerical control machines which allow to perform mechanical machining of high precision



iciency to its customers

3 | **CAD** and **CAM** software for mechanical design

4 | Heat treatment such as hardening, anodizing, nitriding and nickel plating, made by partner companies





L'esperienza acquisita nel settore delle lavorazioni meccaniche di precisione ci permette, quindi, di lavorare una vasta gamma di materiali, (**materie plastiche, alluminio 5083/6082/7075, ottone, rame, acciaio, acciaio INOX 303/304/316/420, titanio**) eseguendo lavorazioni meccaniche per conto terzi di tornitura, fresatura, rettifica, foratura, maschiatura, elettroerosione a file e tuffo su macchine utensili a controllo numerico.

La politica aziendale, basata sull'**alta qualità**, è garantita dalla dotazione di strumenti per il controllo della qualità prodotta, sia nei reparti produttivi che in sala metrologica. Inoltre la continua implementazione del sistema gestionale permette all'azienda un **costante monitoraggio del carico di lavoro, dei programmi produttivi e delle performance aziendali**.



Metrology Room

An added value for the best quality precision machining.

Our constant desire to do better and to satisfy our clients with **the most meticulous mechanical parts** led us to realise an **air-conditioned measuring room inside the plant with a set temperature of 20° C**.

Inside we set up **the CMM Zeiss Contura measuring machine**. Thanks to the RDS probe holder and the Vast XXT scanning sensor it allows the measurement of any geometric and dimensional characteristic of any mechanical component, regardless its position.

It is particularly indicated for complex measurements, that need a significant accuracy, it permits us to carry out tests and **provide a dimensional certification on request**.

Devices inside the room

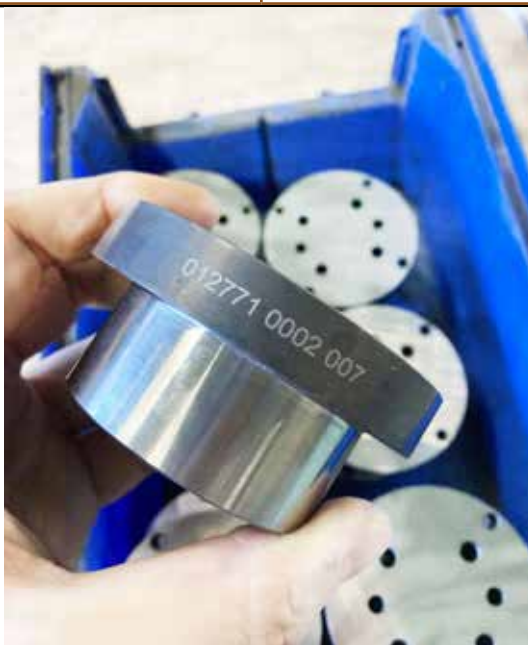


CMM Zeiss Contura measuring machine 09/12/08

(X900 Y1200 Z800 stroke)
Managed by Software Zeiss Calypso

LASEREVO laser marking machine

can mark DXF and DWG files, JPG
pictures and generate QR code,
Datamatrix, Barcode





The production department of the company offer as well as **a qualified and professional experience of its employees** and a complete machinery park. The machine range allows high precision and efficient precision machining.



The experience gained in the field of precision machining allows Mecwork to manufacture intricate parts made from a variety of metals including:

Plastic

Aluminium

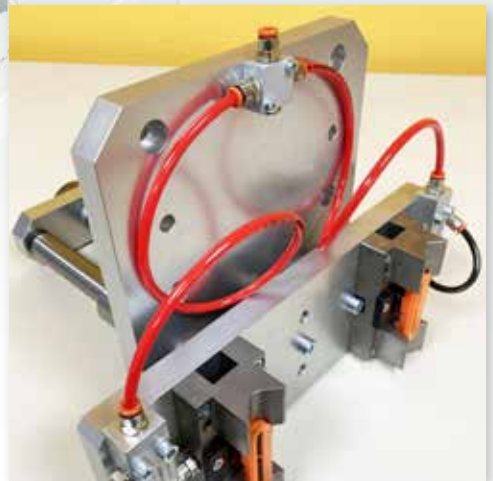
Brass

Copper

Steel

Titanium

and carry out mechanical machining operations such as turning, milling, drilling and tapping using CNC machine tools.





Manual assembly of mechanical components

Mechanical assembly and mounting of pre-processed parts

Thanks to the Know-how in the mechanical sector, our high-skilled staff is able to previously mount or assemble mechanical prototypes, sub-units and automatic machinery including mechanical components that are previously realised or processed.

This way the client will receive directly in his company a group of assembled mechanical components, an assembled machinery and even a fully assembled robotic work station.



Machining Centre SPINNER

Models VC750

Tools: 24

12.000 rpm

Travel: X760 Y460 Z460

Table dimensions: 900x410

CNC Lathe SPINNER

Models TC600SMCY

Tools: 16

6.000 rpm

Travel: X250 Z750 Y +50/-40



Machining centre 5-axis DMG MORI

Models DMU 50 3rd

Tools 120

HSK63 15.000 rpm

Travel X650 Y520 Z475

Automation by N.72 Pallet



Machining centre 5-axis DMG MORI

Models DMU 50 3rd
Tools 120
HSK63 15.000 rpm
Travel X650 Y520 Z475
Automation by N.72 Pallet

Machining Centre DMG

Models DMC1035V
Tools: 30
12.000 rpm
Travel: X1035 Y560 Z510
Table dimensions: 1200x560



Machining Centre DMG

Models DMC635V
Tools: 20
8000 rpm
Travel: X635 Y500 Z450
Table dimensions: 790x560



Milling machine 5-axis DMG

Models DMU50

Tools: 30

10.000 rpm

Travel: X500 Y450 Z400 B-5°+110°

Table dimensions: D.630x500

Machining Centre SPINNER

Models VC1150

Tools: 32

14.000 rpm

Travel: X1150 Y620 Z600

Table dimensions: 1400x620



CNC Lathe PICO

Turning diameter max 310mm

Travel: X1000 Y300



MEP SHARK 230
automatic band
saw

Grindind Tangent FAVRETTO

Travel: X1100 Y500 Z650
Table dimensions: 1200x500



Wire EDM ONA AF35

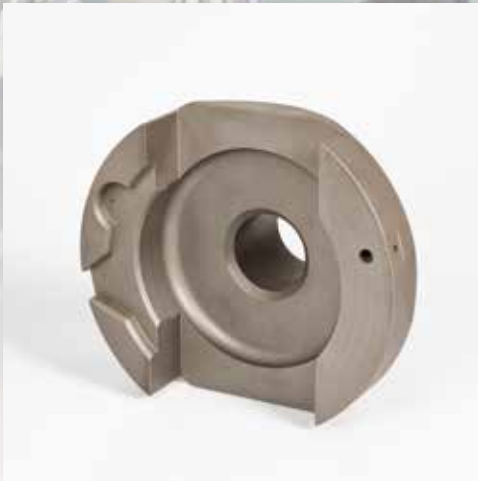
Travel: X600 Y400 Z400
Maximum piece size
1060x750x400

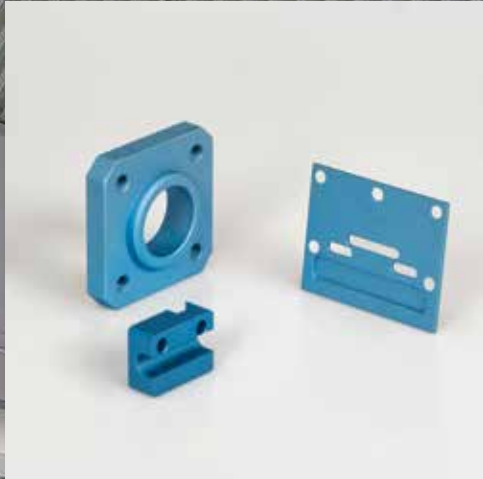


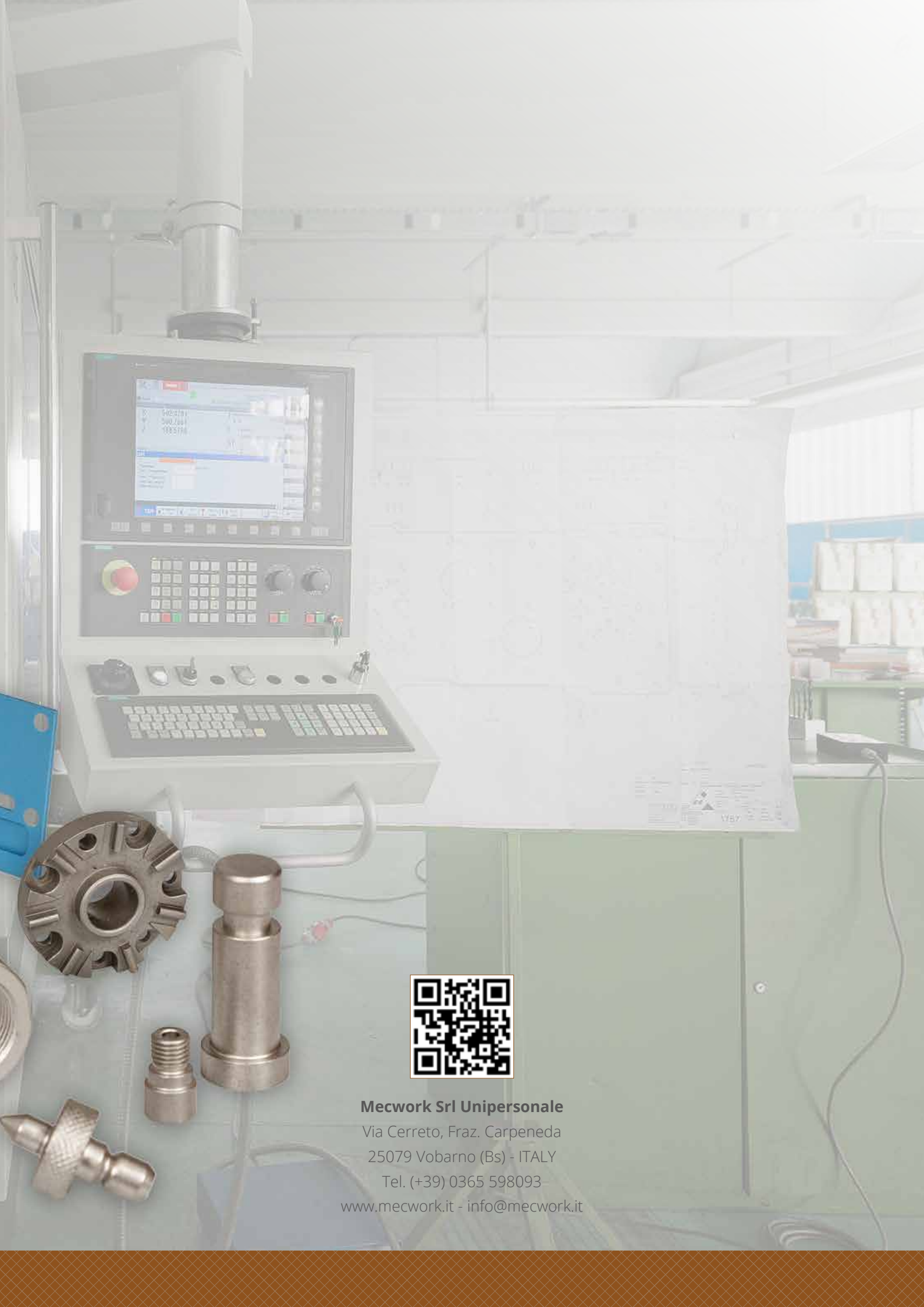
Wire EDM ONA Techno 300

Travel: X350 Y250 Z300









Mecwork Srl Unipersonale

Via Cerreto, Fraz. Carpeneda

25079 Vobarno (Bs) - ITALY

Tel. (+39) 0365 598093

www.mecwork.it - info@mecwork.it